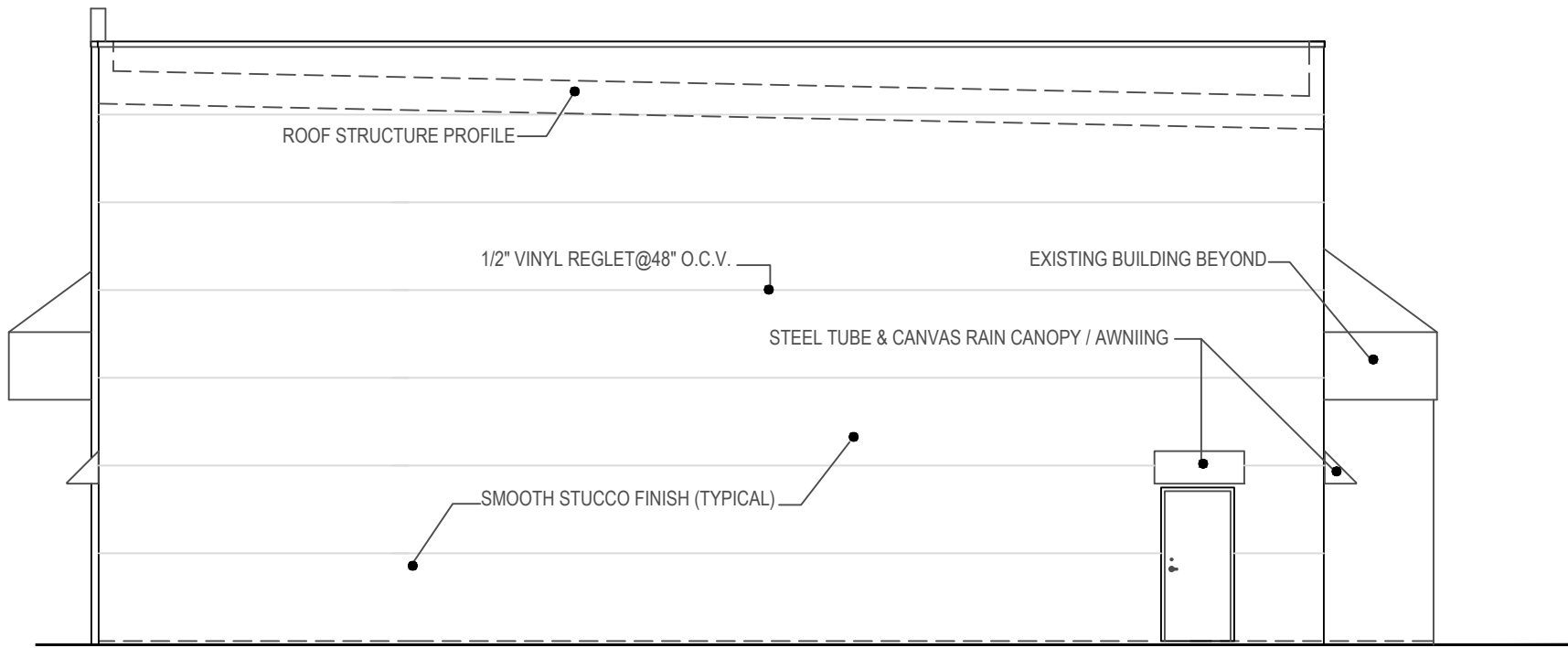
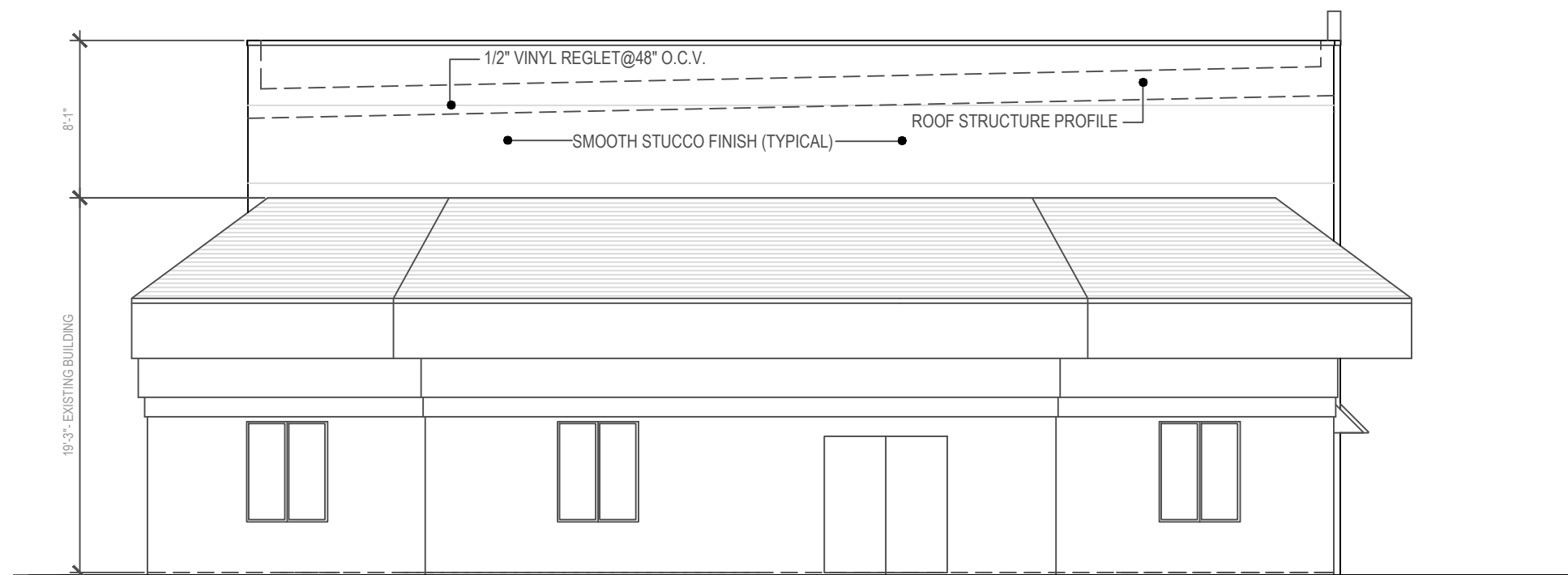


| DOOR SCHEDULE |      |                 |  |       |                          |  |
|---------------|------|-----------------|--|-------|--------------------------|--|
| MARK          | TYPE | SIZE            | MATERIAL                                     | FRAME | HARDWARE                 | REMARKS  |
| 1             | J    | 12'-0" X 14'-0" | STEEL ROLL-UP                                |       | CHAIN DRIVE              | PROVIDE POSITION SENSOR                                  |
| 2             | D    | 3'-0" X 7'-0"   | STEEL <div>THR RATED<br/>FOR 1 HR WALL</div> | STEEL | LEVER LATCH, AUTO CLOSER | C-LABEL DOOR    PROVIDE POSITION SENSOR                  |
| 3             | C    | 3'-0" X 7'-0"   | SOLID CORE WOOD                              | STEEL | LEVER LATCH, AUTO CLOSER | STAIN GRADE FLUSH PANEL CLASS -1 SAFETY GLASS VIEW PANEL |
| 4             | D    | 3'-0" X 7'-0"   | SOLID CORE WOOD                              | STEEL | LEVER LATCH, AUTO CLOSER | INTERIOR DOOR , CLASS -1 SAFETY GLASS VIEW PANEL         |

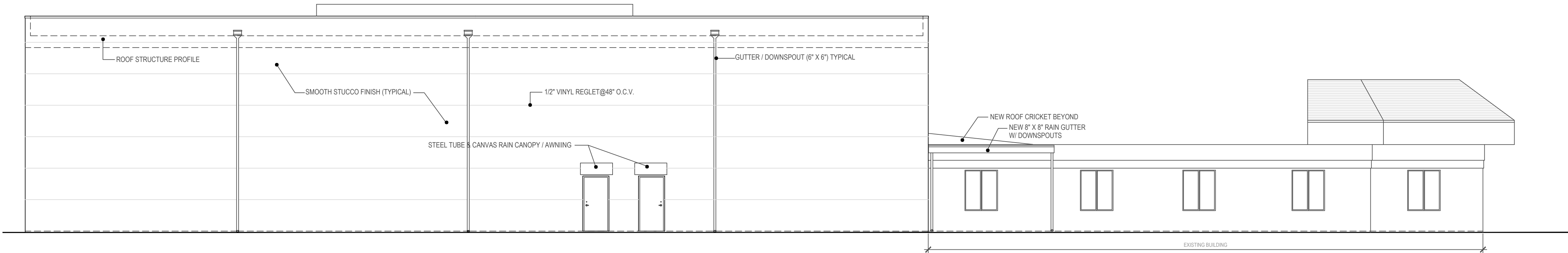
1. ADJ. THRESHOLD, DEADBOLT TO REMAIN UNLOCKED DURING NORMAL BUSINESS HOURS ( PLACARD), PROVIDE N.O.A., SEE N.O.A. FOR HARDWARE APPROVALS
2. SEE ELEVATIONS FOR DESIGN WIND PRESSURE ON EXTERIOR DOORS
3. EGRESS DOORS SHALL BE READILY OPENABLE FROM THE EGRESS SIDE WITHOUT THE USEOF A KEY OR SPECIAL KNOWLEDGE OR EFFORT.
4. THE DOOR RELEASING MECHANISM FOR ANY LATCH SHALL BE LOCATED AT LEAST 34" & NOT MORE THAN 48" ABOVE THE FINISHED FLOOR.
5. DOORS SHALL BE EQUIPPED WITH LEVER-STYLE HANDLES AND SHALL NOT REQUIRE TIGHT GRASPING, PINCHING OR TWISTING OF THE WRIST TO OPERATE.
6. CHANGE IN FLOOR LEVEL INCLUDING THRESHOLD AT EXTERIOR DOORS SHALL NOT EXCEED 1/2".



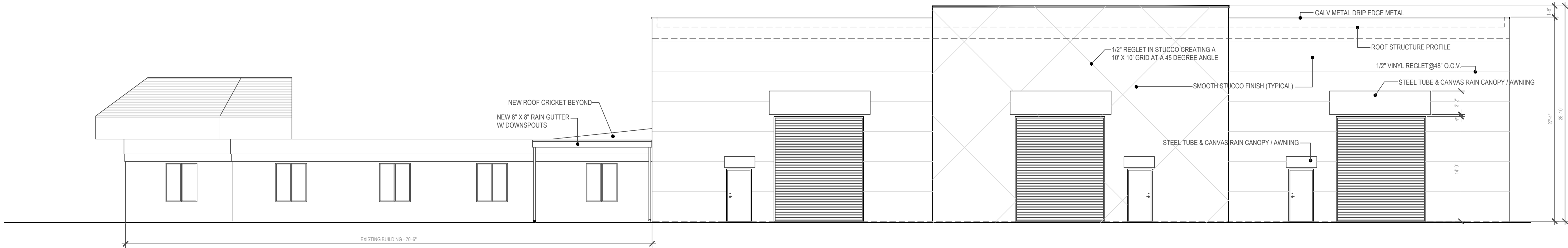
WEST (FRONT) ELEVATION  
SCALE 1/8"=1'-0"



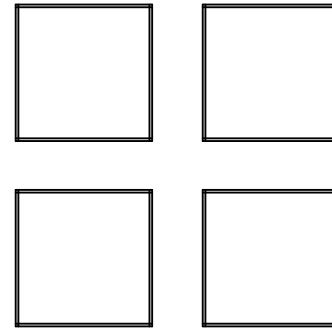
WEST (FRONT) ELEVATION  
SCALE 1/8"=1'-0"



NORTH ELEVATION  
SCALE 1/8"=1'-0"



SOUTH ELEVATION  
SCALE 1/8"=1'-0"



WAREHOUSE ADDITION  
FOR  
POMPANO 1150 LLC

CARLOS DOUGNAC  
REG. ARCHITECT #9423  
1845 NW 113TH DR  
GAINESVILLE, FL 32609  
352.260.1829



IMPROVEMENTS  
FOR  
POMPANO 1150 LLC  
315 N.W. 180TH STREET  
MIAMI, FLORIDA 33179  
AT  
POMPANO BEACH  
FLORIDA

DRC SET  
NOT FOR CONSTRUCTION

ISSUED:  
-10.31.25-  
03.25.26

REVISIONS:

DATE:  
~~06.28.25~~  
03.25.26

DWG NAME:

TITLE:  
ELEVATIONS

A-4  
OF X

